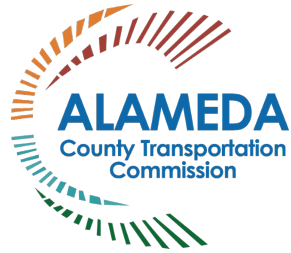


Having trouble viewing this email? [Click here](#)



TRANSPORTATION E-NEWS

# ALAMEDA CTC REPORTS

PLAN | FUND | DELIVER

AUGUST 2020

## ALAMEDA CTC RESPONDING PROACTIVELY TO COVID-19



As counties across the state use Governor Newsom's [Pandemic Resilience Roadmap](#) to begin opening, Alameda CTC is focused on immediate steps it can take to address challenges that COVID-19 presents across the County, including to local jurisdictions and transit agencies, our partners in transportation and our communities... [Learn More](#).

## TOP STORIES

---



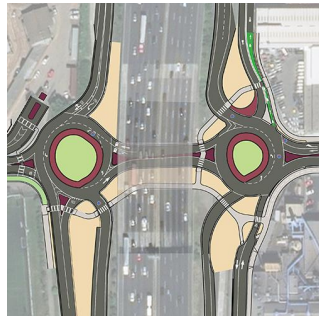
### 2020 Countywide Transportation Plan Development - Crafting a Transportation Future

Alameda CTC staff have been working on an update to the Countywide Transportation Plan (CTP) since mid-2019. The CTP is updated every four years and focuses on promoting... [Learn More](#).



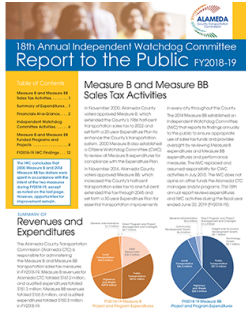
### What's New in Express Lanes

After Bay Area counties and the State of California issued Shelter in Place orders during the COVID-19 public health crisis, all Bay Area regional express lane operators reached consensus to... [Learn More](#).



### Project Updates

Since early March, when the Alameda County Public Health Department issued a Shelter in Place Order due to the COVID-19 pandemic, Alameda CTC Commissioners and staff have been... [Learn More](#).



## 2020 IWC Annual Report to the Public

Alameda CTC's Independent Watchdog Committee (IWC) will release its 18th consecutive [Annual Report to the Public](#) this month. The report, which covers fiscal year 2018-2019 expenditures and IWC activities, confirms... [Learn More.](#)



## San Leandro Street Rehabilitation - A Measure BB Grant-funded Project

Since 2018, the City of San Leandro has been aggressively investing \$30 million in Alameda County voter-approved Measure BB funds, in combination with Senate Bill 1 funds, to improve its streets and ... [Learn More.](#)

### About Alameda CTC

The Alameda County Transportation Commission plans, funds and delivers transportation programs and projects that expand access and improve mobility to foster a vibrant and livable Alameda County. Funding sources for Alameda CTC's expenditure plans include Measure B, approved by 81.5 percent of county voters in 2000; Measure F, a Vehicle Registration Fee approved by 63 percent of county voters in 2010; and Measure BB, approved by more than 70 percent of voters in 2014.

For more information, visit [www.AlamedaCTC.org](http://www.AlamedaCTC.org).

### Follow Us



Alameda County Transportation Commission,  
1111 Broadway, Suite 800, Oakland, CA 94607

[SafeUnsubscribe™ {recipient's email}](#).

[Update Profile](#) | [About our service provider](#)

Sent by [tlengyel@alamedactc.org](mailto:tlengyel@alamedactc.org).