



Rendering of shared mobility.



ALAMEDA COUNTY TRANSPORTATION COMMISSION
EXECUTIVE DIRECTOR'S REPORT

APRIL 2020

Keeping Our Promises

Alameda CTC is keeping our promises of delivering projects and programs while supporting jobs, even during this trying time. I am ensuring that all our staff are able to work fully remotely to continue to perform strategic planning, develop projects and programs, move projects into construction, and process payments to our cities, the county, transit and business partners. We are an important part of the economic recovery.

Thank you,

TABLE OF CONTENTS

- 1 Project Updates
- 2 Planning and Program Updates
 - Policy News
- 3 Programming Updates
 - Finance Updates
- 4 Agency Activities
 - Other News
 - Committee Activities

Project Updates
Projects moving into construction this year

Alameda CTC has several projects with significant external funding that are either under construction or will move into construction this year. These projects represent a combined investment of \$660 million, with \$459 million leveraged from other local, regional, state and federal funds. These projects will provide a wide range of transportation improvements, including improving freeway interchanges, constructing bike lanes and sidewalks, extending express lanes and improving goods movement.



State Route 84 and State Route 84/Interstate 680 Interchange Improvements

The **State Route 84 (SR-84) Widening and SR-84/Interstate 680 (I-680) Interchange Improvements** project will conform SR-84 to expressway standards between Ruby Hill Drive and the I-680 interchange, improve the SR-84/I-680 interchange ramps, extend the existing I-680 southbound express lane northward by two miles, and add bike lanes along SR-84 and under I-680. Alameda CTC will request a state fund

allocation for this project in fall 2020. Construction is slated to begin in late 2020.



Aerial view of Gilman Street at Interstate 80 looking westward.

The **Interstate 80 (I-80)/Gilman Interchange Improvement Project** will reconfigure the I-80/Gilman Street interchange to improve traffic operations and safety for motorists through the interchange, as well as provide facilities that improve access for pedestrians and bicyclists. The project includes a new pedestrian and bicycle overcrossing over I-80. Alameda CTC will request a state fund allocation for this project in fall 2020, allowing for construction to begin late 2020.

The **7th Street Grade Separation East** project will replace the existing railroad underpass on 7th Street, which serves as a key access point into the Port of Oakland. The project will provide increased clearance for trucks, improve traffic operations and reduce

Project Updates cont'd on page 4

Planning and Program Updates

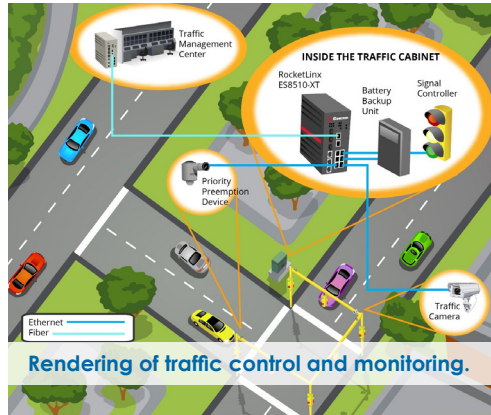
New mobility in Alameda County

Alameda CTC is developing a new Mobility Strategy to provide guidance and a framework to implement and address new mobility services and transportation technologies in Alameda County. The outcome is expected to be a set of policies, strategies and action items that include pilot projects and programs. The intent is to help Alameda CTC and local jurisdictions capitalize on new opportunities, while at the same time be aware of the potential risks of new technologies. This effort will inform the 2020 Countywide Transportation Plan (CTP).

To guide this process, Alameda CTC has formed a Technology Working Group (TWG) with local jurisdictions from each planning area—north, south, east and central county, as well as AC Transit—with experience in working with new technologies and mobility services.

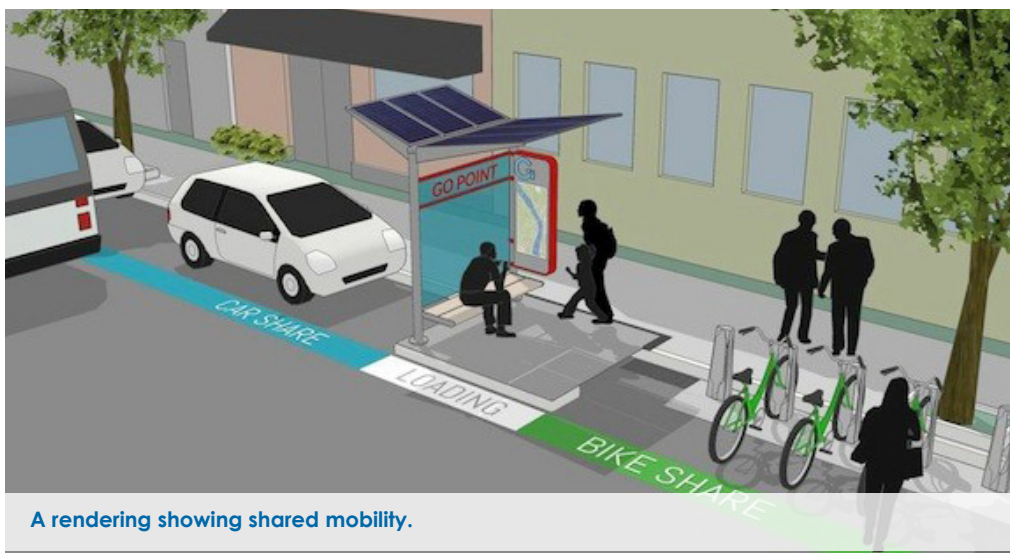
Alameda CTC selected a consultant team to support development. Based on various planning efforts that include the CTP, Alameda CTC staff developed goals for the new Mobility Strategy. The following policy areas for transportation technology will be addressed:

- Connected
- Shared
- Electric
- Autonomous
- Data



The strategies offer an approach to achieve the goals and desired outcomes in the context of policy areas while identifying potential risks and opportunities. These strategies will later help identify a number of supportive actions, such as pilots programs and projects, which Alameda CTC can undertake or support.

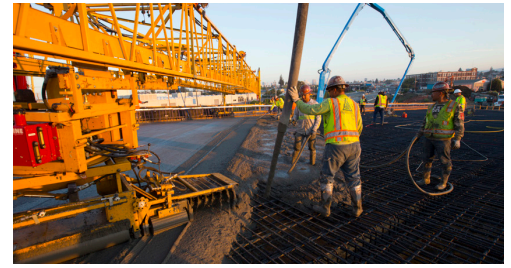
Technology strategies are currently being reviewed by the TWG. Updated strategies based on comments will be presented to the Commission in summer 2020. The new Mobility Strategy will be finalized as part of the 2020 CTP in late 2020.



A rendering showing shared mobility.

Policy News

Alameda CTC prioritizing efforts



As Alameda CTC continues to adjust to the COVID-19 pandemic, the agency is prioritizing efforts that relate to funding essential services, advancing items that support jobs and job creation in the immediate future, and time sensitive agency operational matters. Alameda CTC is actively working to continue advancing priority projects, including pursuing funding for major capital projects, such as the Global Opportunities at the Port of Oakland (GoPort) and the Rail Safety Enhancement programs, that together seek to improve goods movement efficiency and reduce impacts of goods movement on local communities. The Commission is also working with our partners to support funding for transit operators during this pandemic.

Commission meetings will proceed during the pandemic using remote technology; updates and details for how to participate can be found on Alameda CTC's [Meetings web page](#).



Programming Updates

2020 Comprehensive Investment Plan update

Alameda CTC's Comprehensive Investment Plan (CIP) is a near-term strategic programming document through which fund sources administered by Alameda CTC are consolidated and programmed through a singular programming cycle. The current 2020 CIP for FYs 2019-20 through 2023-24 includes \$212 million in programming, with \$153 million in allocations during the first two years of the CIP. The 2020 CIP, scheduled to go to the Commission for approval in May, captures programming made throughout the past year, as well as minor adjustments to deprogram unspent allocations from completed projects. The 2020 CIP Update is available on Alameda CTC's [Funding Opportunities web page](#).

Finance Updates

Alameda CTC budget process advances

Alameda CTC's finance team began the development process for the FY 2020-21 budget during March. Finance is working with all departments in the agency to capture comprehensive revenue and expenditure needs for ongoing projects and programs to incorporate them into the budget. The finance team will work closely with the programming team to ensure that budget recommendations are incorporated into Alameda CTC's Comprehensive Investment Plan. The budget development process will be ongoing throughout April, with the FY 2020-21 proposed budget going before the Commission for approval in May.

The finance and administration team has been instrumental in ensuring that working remotely for the agency

continues during this time. They quickly established and deployed the tools necessary for all staff to continue operating remotely to deliver essential projects, programs and planning efforts for Alameda County residents and businesses.



Construction on Interstate 680 northbound, Courtesy of Caltrans.

Contracting opportunities

Alameda CTC anticipates upcoming solicitation of bids and/or proposals for the following:

Professional Services contracts

- Project Delivery Services
- I-880 Interchanges (Whipple Road/ Industrial Parkway Southwest and Industrial Parkway West) Improvements
- Dublin Boulevard – North Canyon Parkway Extension
- Paratransit Coordination Services
- State Route 262 (Mission Boulevard) Cross Connector
- Contract Equity Support Services
- Information Technology Support Services

Construction contracts

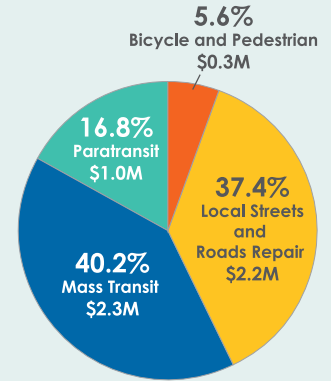
- I-880 Southbound High Occupancy Vehicle Lane – Replacement Highway Planting
- 7th Street Grade Separation East – Construction Services
- SR-84 Plant Establishment Services

For more information, visit the [Contracting Opportunities web page](#).

Transportation Investments

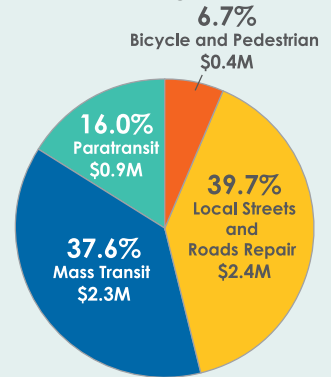
Measure BB Program Distributions

Measure BB direct local distributions began in April 2015 and total over \$363.0 million; over \$5.8 million was distributed in January 2020.



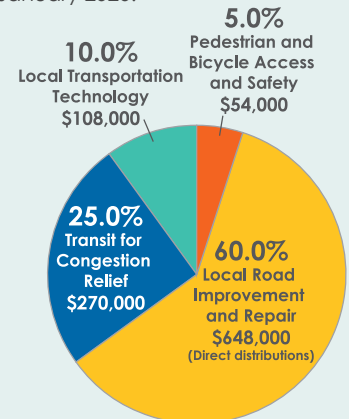
Measure B Program Distributions

Measure B direct local distributions have totaled more than \$1.1 billion since 2002. In January 2020, over \$6.0 million was distributed for four programs.



Vehicle Registration Fee

Since 2011, Alameda CTC has distributed more than \$62.6 million for local road repair; over \$1.0 million was collected in January 2020.



Agency Activities

During April, Alameda CTC was scheduled to host, sponsor or participate in a number of events, however, due to the current health crisis, all except for a few events were either canceled or postponed. All BikeMobile events and school visits were canceled.

The following event was held virtually:

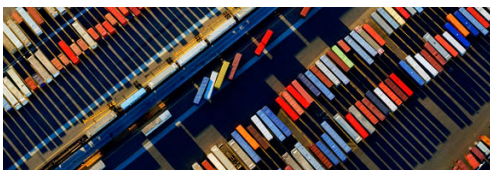
- April 21 - Rotary Club of Castro Valley, Virtual meeting

The Governor of California's initial Shelter in Place Order was extended through to May 3. We look forward to events resuming after more direction from the state and health officials.

Project Updates cont'd from page 1

congestion and construct a shared pedestrian/bicycle pathway. Alameda CTC intends to seek approval from the state later this year for funding that will allow for construction to begin late 2020.

The [Freight Intelligent Transportation System](#) project at the Port of Oakland consists of three contracts that will deploy and integrate technology elements such as cameras, changeable message signs and web-based applications. This project will improve truck traffic flows, increase the efficiency of goods movement operations and enhance safety and incident response capabilities throughout the seaport. Bids are expected by the end of the year and construction is expected to begin in early 2021.



Other News

Safe Routes to Schools in Light of COVID-19

At this time, in light of school closures and the Alameda County Department of Health's Shelter in Place Order, the Safe Routes to Schools program is unable to deliver full services.

Bike Month

In consultation with our partners at the regional and local levels, a number of Bike to School Day and related SR2S Bike Month activities have been rescheduled to late September for health and safety reasons. Traditionally celebrated in May, Bike to School Day offers a wonderful opportunity for students to use shared and active transportation to get to school. Bike to School Day is one of many events around the Bay Area during National Bike Month and coincides with Bike to Work Day, also traditionally held in May.

Golden Sneaker Contest and the Platinum Sneaker Award

This year's Golden Sneaker Contest had 100 schools participate during the annual two-week contest in late February/early March. Entire school communities were encouraged to get active and walk, roll, bike, carpool or take transit to school. This year, approximately 63,000 students from Alameda County elementary, middle and high schools participated, along with their families, teachers, staff and administrators.

This year, due to the COVID-19 pandemic, schools were not able to report back on final participation in the Golden Sneaker contest, which occurred just before the Shelter in Place Orders were issued. Thank you to all of the school community members and students who participated.

The Platinum Sneaker Award is presented to the school with the greatest percent increase of students using active or shared modes during the Golden Sneaker Contest, but because of the closures, schools were unable to provide their travel data, so unfortunately, we are unable to determine a winner.

During this forced hiatus amidst all of the rescheduling due to the COVID-19 pandemic, we are all working diligently, albeit virtually, to plan and prepare for the program's 15th year of operations next school year, focusing on ushering in a robust 2020-2021 school year.



Committee Activities

April advisory committees

Due to the current health crisis, Alameda CTC meetings are being held virtually via Zoom. As with all meetings, the public is welcome to comment. Instruction on participation can be found in each agenda packet. Meetings will continue in this fashion until the current Shelter in Place Order issued by Governor Newsom is lifted.

In April 2020, all Alameda CTC advisory committee meetings have been canceled.