



Joint PAPCO and ParaTAC planning meeting.



ALAMEDA COUNTY TRANSPORTATION COMMISSION

EXECUTIVE DIRECTOR'S REPORT

MARCH 2020

The Executive Director's Report provides focused updates on Alameda CTC's work to improve transportation throughout Alameda County. This report provides status updates on key activities, including capital projects delivery and express lane operations; planning, policy and program implementation; finance and contracting; and programming and project controls. In addition, it contains brief summaries of advisory committee and agency activities.

This monthly update provides a synopsis of transportation project and program implementation funded with local, regional, state and federal funds.

TABLE OF CONTENTS

- 1 Project Updates
- 2 Planning and Program Updates
 - Policy News
 - Programming Updates
- 3 Finance Updates
- 4 Agency Activities
 - Other News
 - Committee Activities

Project Updates

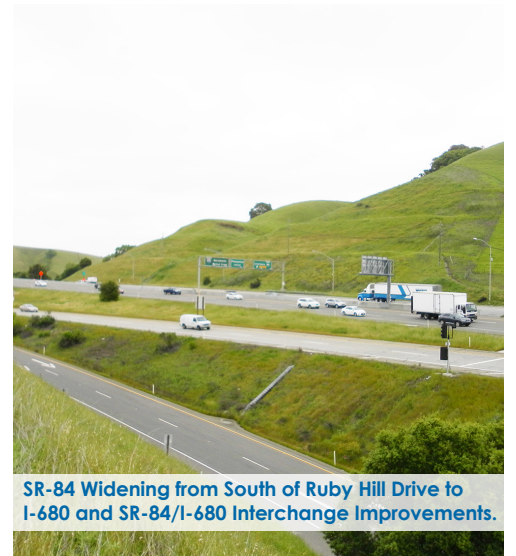
Interchange Improvements

The [State Route 84 \(SR-84\) Widening from South of Ruby Hill Drive to Interstate 680 \(I-680\) and SR-84/I-680 Interchange Improvements](#)

project in Sunol and the City of Pleasanton is the final segment to be constructed in a series of regionally-significant SR-84 corridor improvements in Alameda County. Collectively, these improvements along SR-84 will relieve congestion, improve local traffic circulation and improve safety for commuters and residents in the County.

The project, which will be implemented by Alameda CTC in cooperation with the California Department of Transportation (Caltrans) and the Federal Highway Administration (FHWA), will:

- Conform SR-84 roadway widths from south of Ruby Hill Drive to the I-680 interchange
- Provide operational improvements, including ramp modifications at the SR-84/I-680 interchange
- Class I and Class II bicycle facilities along SR-84 and under I-680
- Extend the start of the southbound express lane approximately two miles north



SR-84 Widening from South of Ruby Hill Drive to I-680 and SR-84/I-680 Interchange Improvements.

Progressing through final design this spring, the SR-84 Widening from South of Ruby Hill Drive to I-680 and SR84/I-680 Interchange Improvements project will be advertised for construction in late summer 2020. Construction is scheduled to begin in early 2021 and is planned to be completed in late 2023.

Total project cost is \$244.1 million, with major funding of \$129.3 million coming from Measure B/BB funds and \$85 million planned from the Bay Area-wide voter-approved Regional Measure 3. The project is also funded by the Senate Bill 1 Local Partnership Program, the State Transportation Improvement Program and the Tri-Valley Transportation Council.

For project updates, visit the [Projects web page](#).

Planning and Program Updates

Emerging Mobility

Alameda CTC's Paratransit Advisory and Planning Committee (PAPCO) met jointly with the Paratransit Technical Advisory Committee (ParaTAC) on Monday, February 24th to receive an update and discuss issues regarding the state of emerging mobility in Alameda County with a focus on the use of Transportation Network Companies (TNCs) by people with disabilities.

The panel discussion was a key opportunity for committee members to receive an update on best practices for contracting with TNCs, receive an update on Senate Bill 1376 (the TNC Access for All Act) and a presentation on local research to-date on the use of Wheelchair Accessible Vehicle (WAV) TNCs.

Panelists included:

- **Marilyn Golden**, Senior Policy Analyst for the Disability Rights Education and Defense Fund (DREDF)
- **Jonathan Stekete**, Customer Service and Contract Compliance Manager for Livermore Amador Valley Transit Authority (LAVTA)
- **Tim McCormick**, Manager of Planning and Performance for Santa Monica Big Blue Bus
- **Naomi Armenta**, Senior Associate for Nelson\Nygaard Consulting Associates

Countywide Transportation Plan Update

Work is well underway to update the Alameda Countywide Transportation Plan (CTP), an effort that the agency undertakes every four years to identify near- and long-term transportation priorities. In January, staff started releasing findings and recommendations from an assessment of travel needs of the

county, with emphasis on pedestrians, bicyclists and travel along freeways. In March, staff will present findings and recommendations related to transit, goods movement and major arterials to the Alameda County Technical Advisory Committee and the Commission.

Staff are also preparing to engage with Alameda County cities and partner agencies during focused meetings in each of the four planning areas of the County: north, central, south and east. These meetings will cover initial project and program recommendations for inclusion in the CTP for each planning area. A refined set of recommendations will be shared with the Commission later this spring.

Release of the draft plan is anticipated in July 2020, and the final CTP is scheduled for adoption in fall 2020.

Policy News

Alameda CTC Work Continues

As the nation grapples with the COVID-19 pandemic, Alameda CTC is actively working to continue to deliver funding for essential services and programs, support jobs and develop transportation solutions while adhering to the directives of County Health Directors and the State of California. Updates to public meetings will be provided on the agency's website, as we work to ensure business can continue in these unprecedented times.

Also during March, Alameda CTC staff worked with a number of partner agencies to develop advocacy principles to engage in discussions with Assemblymember Bonta on Assembly Bill 2824, a bill focused on improving transit service to and over the Bay Bridge. While working on these broader

principles to support improved transit service, carpools and streamlined project delivery, staff also worked with the Metropolitan Transportation Commission to develop an initial funding plan to deliver near-term transit improvements accessing the bridge.

Programming Updates

Alameda CTC's Strategic Plan – Guiding Principles

Alameda CTC has established a Strategic Plan (Plan) to guide its approach to pursuing prospective local, regional, state and federal funds for the delivery of transportation improvements across Alameda County, creating synchronicities between planning efforts and project delivery strategies. The Plan addresses near-term financial implementation of countywide projects and programs, including identifying needs, priority projects, funding constraints and potential strategies to leverage existing local Alameda CTC-administered fund sources (e.g. Measure B, Measure BB, Vehicle Registration Fee Program and the Transportation Fund for Clean Air) against various externally available federal, state and regional funding programs.

Alameda CTC looks to the Plan to maximize investments, leveraging funds under its purview for additional competitive transportation funding dollars for a balance set of countywide transportation projects to maintain a well-connected and efficient system for the whole county. Moreover, the Plan ensures that the investment strategy remains flexible, providing capacity to respond to emerging and unanticipated needs while in pursuit of competitive funds anticipated to be available to Alameda County.

Programming Updates cont'd on page 3

Programming Updates cont'd from page 2

Between Alameda CTC-implemented projects and projects implemented by project sponsors, there is a collective total project cost of \$6.7 billion, with only \$2.1 billion committed through Measure BB, regional measures, state and federal programs and other local sources. To ensure the delivery of all projects slated for implementation in the next decade, \$4.6 billion of external funds will be need to be secured.

Plan directives are implemented through the Alameda CTC's Comprehensive Investment Plan, project delivery efforts and the policies associated with the programming and allocations of Alameda CTC-administered funds.

City of Berkeley Milvia Bikeway Cycle Track – Measure B Bike/Ped

The City of Berkeley has completed the preliminary engineering phase for its Milvia Bikeway project using a \$350,000 Measure B Bicycle/Pedestrian Grant. This project will replace the existing Milvia Street Bicycle Boulevard between Hearst Avenue and Blake Street with a cycle track and intersection improvements, including a protected intersection at University Avenue. The project will provide a safer, more direct route through Downtown Berkeley without necessitating bicycling on congested Shattuck Avenue, which currently has no dedicated bicycle facilities.

The City received a \$2.8 million grant from the California Affordable Housing and Sustainable Communities (AHSC) program, which together with \$150,000 of Berkeley's Measure BB Bicycle and Pedestrian Direct Local Distribution Program funding will allow completion of the engineering design and construction of this protected bikeway project.

Programming Updates cont'd on page 4

Finance Updates

Fiscal Year 2019-20 Mid-Year Budget Update

During February, the finance team prepared a mid-year update to Alameda CTC's budget for fiscal year (FY) 2019-20. The update incorporates changing needs of the agency since the budget was adopted in May 2019, updates to the beginning fund balances in each fund to reflect the audited ending fund balances from the prior fiscal year and accurately reflects all funding rolled forward from the prior fiscal year for all capital projects. This mid-year update is scheduled to go to the Finance and Administration Committee and the Commission for approval in April.

Also during February, the Commission reviewed and approved several important finance and administration related items, including the second quarter financial report and the second quarter investment report, which reflect the strong financial position of the agency, the report on claims acted upon under the Government Claims Act and the FY 2018-19 annual local business contract equity program utilization report.

Contracting opportunities

Alameda CTC anticipates upcoming solicitation of bids and/or proposals for the following:

Professional Services contracts

- I-880 Interchanges (Whipple Road/ Industrial Parkway)
- Dublin Boulevard – North Canyon Parkway Extension
- State Route 262 (Mission Boulevard)

Construction contracts

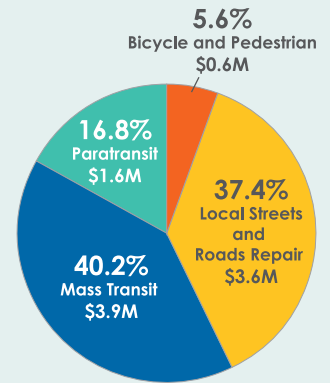
- SR-84 Plant Establishment Services
- I-880 Southbound High-Occupancy Vehicle Lane – Replacement Highway Planting
- 7th Street Grade Separation East

For more information, visit the [Contracting Opportunities web page](#).

Transportation Investments

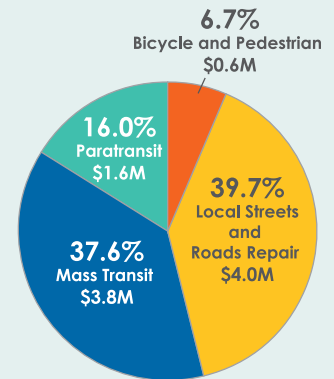
Measure BB Program Distributions

Measure BB direct local distributions began in April 2015 and total over \$363.0 million; over \$9.7 million was distributed in December 2019.



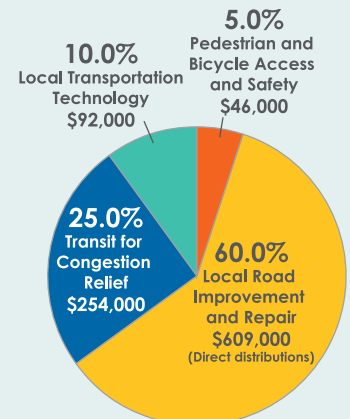
Measure B Program Distributions

Measure B direct local distributions have totaled more than \$1.1 billion since 2002. In December 2019, over \$10.0 million was distributed for four programs.



Vehicle Registration Fee

Since 2011, Alameda CTC has distributed more than \$62.0 million for local road repair; over \$1.0 million was collected in December 2019.



Agency Activities

During March, Alameda CTC was scheduled to host, sponsor or participate in the following events. Note that all events after March 12 have been canceled because of Alameda County's shelter-in-place mandate due to the COVID-19 virus:

- BikeMobile events and school visits:
 - March 4 – Winton Middle School, Hayward
 - March 5 – Dublin Elementary School, Dublin
 - March 6 – Golden Oak Montessori, Castro Valley
 - March 7 – Impact Academy of Arts & Technology, Hayward
 - March 11 – Donlon Elementary School, Pleasanton; Lighthouse Community Charter, Oakland,
 - March 12 – Bay Elementary School, San Lorenzo
- March 3 – I-580 Altamont Pass Corridor Executive Solutions Working Group Meeting, Oakland
- March 11 – 2020 Economic Summit, Oakland
- Following are March events canceled for health safety:
 - Alameda County City Managers Association, San Leandro
 - Alameda CTC legislative visit, Sacramento
 - Transit Fair, Pleasanton
 - Transition Information Fair, Alameda

Carpooling Options



A number of options to facilitate carpooling are now available in the Bay Area, all aimed at making carpooling more convenient. Carpool apps make it easy to schedule one-way carpool trips and allow you to be either a driver or a passenger.

Try the 511 RideMatch Service to find and email neighbors with similar

Other News

Celebrating Leadership



Alameda CTC wants to thank former Commission Chair Richard Valle for his exemplary leadership of the Commission. As Supervisor of Alameda County's District 2, Valle was appointed to the Alameda CTC Commission in 2012. He was first elected Vice Chair in 2016, serving two terms with then Chair Rebecca Kaplan, City of Oakland Councilmember-at-Large. And in 2018, he was elected Chair of the Commission, serving two terms through 2020 with Mayor Pauline Cutter, currently the Commission's Chair, as his Vice Chair. We cannot thank Commissioner Valle enough for his commitment to Alameda CTC, all of the good work done during his tenure, his professionalism, and his clear vision with regard to community and economic development.

commutes, or try [one of the carpool apps available at rideshare.511.org](https://rideshare.511.org).

Commute Options

Whether you're a commuter trying to affordably and safely get around Alameda County or an employer coordinating staff transportation options, the

[Commuter Choices web page](#) has the resources you need.



Committee Activities

Advisory committees

Highlights for March committees are as follows:

- March 5 – The [Alameda County Technical Advisory Committee \(ACTAC\)](#) approved the Plan Bay Area 2050 revised list and performance strategies for Alameda CTC to be submitted to the Metropolitan Transportation Commission. The committee also received the Needs Assessment, Part 2 update to the 2020 Countywide Transportation Plan.
- March 9 – The [Independent Watchdog Committee \(IWC\)](#) established their IWC Annual Report Subcommittee and scheduled its first AdHoc Subcommittee meeting to discuss next steps for Measure B and Measure BB Direct Local Distribution Audit and Compliance Reports and the need to forward any comment/findings to Alameda CTC in late March. The committee also discussed the sign-up roster for the Projects and Programs Watchlist, a volunteer list to watch specific Measure B- and BB-funded projects and programs.
- March 10 – The [Paratransit Technical Advisory Committee \(ParaTAC\)](#) members received the fiscal year 2019-20 ParaTAC meeting calendar, PAPCO roster and paratransit outreach calendar. Committee members also discussed TNC partnerships, mobility management and emergency preparedness and exchanged technical information.

Programming Updates cont'd from page 3

Completion of the Alameda CTC-funded conceptual design supported the successful grant application, enabling a smooth transition to final design and construction of the now fully-funded capital project—delivering return on investment of Alameda CTC funding.