



Doyle Street Quick-Build bicycle and pedestrian project.



ALAMEDA COUNTY TRANSPORTATION COMMISSION

# EXECUTIVE DIRECTOR'S REPORT

FEBRUARY 2021

## Keeping Our Promises

Alameda CTC is keeping our promises of delivering projects and programs while supporting jobs and the economy. I am ensuring that the agency continues to perform strategic planning, develop projects and implement programs, move projects into construction, and process payments to our cities, the county, transit agencies and business partners during this pandemic. Our work is an important part of the economic recovery.

Thank you,

Tess

## TABLE OF CONTENTS

- 1 Project Updates
- 2 Planning and Program Updates
- Policy News
- 3 Programming Updates
- Finance Updates
- 4 Agency Activities
- Other News
- Committee Activities

## Project Updates

Interstate 580 Express Lanes celebrate 5th anniversary!



I-580 Express Lanes.

Since opening in February 2016, the I-580 Express Lanes have been operating along approximately 10 miles from Hacienda Drive in Pleasanton to Greenville Road in Livermore in the eastbound direction, and approximately 12 miles from Greenville Road to the Interstate 580 (I-580)/ Interstate 680 (I-680) Interchange in Dublin in the westbound direction.

By optimizing corridor capacity, the express lanes have provided motorists with significant benefits, including travel time savings and travel reliability.

The express lanes are toll-free for carpools, clean-air vehicles, motorcycles and transit vehicles. Drivers of single-occupancy vehicles can pay a toll to use the express lanes. During peak travel times, congested locations have recorded 10-20 mph faster lane speeds and they have a better level of service than general purpose lanes. Implementation of the new clean-air vehicle partial toll policy adopted in 2020 is expected later this year.

From inception through December 2020, the I-580 Express Lanes have recorded over 36.5 million total trips and collected over \$51 million in gross toll revenues that fund ongoing operations, facility maintenance and risk reserves.

Visit Alameda CTC's [I-580 Express Lanes webpage](#) for more information. For additional information on all express lanes managed by Alameda CTC, visit Alameda CTC's [Express Lanes webpages](#).

For more information on these and other Alameda CTC projects, visit the [Projects webpage](#).



## Planning and Program Updates

### Safe Routes to Schools Program Evaluation Results

Each school year, the Alameda County Safe Routes to Schools (SR2S) Program produces year-end reports for participating schools that detail all of the activities accomplished during the previous school year. These reports include "snapshots" for individual schools and each school district, as well as a full year-end report for the entire program. Both the "snapshots" and the year-end report track how schools participate in the program, enabling staff to monitor trends. Specific elements the reports track include modes of transportation, school participation in SR2S activities, equity and safety. The 2019-20 Year-End Report details how the program adapted in response to the COVID-19 pandemic. After the initial Alameda County Public Health shelter-in-place order, the program shifted to offer virtual SR2S activities, including bike and pedestrian safety trainings and simulators, as well as creative ways for students to get actively involved while at home.

Access the reports on our website by selecting the links below:



- **Individual school snapshots:** <https://alamedacountysr2s.org/our-program/enrolled-schools>
- **School district snapshots:** <https://alamedacountysr2s.org/our-program/reports-and-resources/year-end-reports>
- **SR2S Program Year-End Report:** <https://alamedacountysr2s.org/our-program/reports-and-resources/year-end-reports/>

Currently, the SR2S program is customizing its spring 2021 data collection plan to fit the context of COVID-19. This year, the program will focus on data that can be collected online.

### Affordable Student Transit Pass Program Update

The Student Transit Pass Program (STPP) is currently halfway through the second year of the ongoing program. For this 2020-21 school year, the STPP has expanded by three new school districts and 21 new schools. The program now serves 14 school districts and 84 schools within Alameda County. All program components are available on Alameda CTC's [Student Transit Pass Program webpage](#).

The STPP team has been coordinating with individual STPP schools on all components of program procedures to ensure that students and families can apply for STPP Clipper cards online and learn about new COVID-19 safety protocols for riding transit. This will allow students to have cards in hand should schools transition to on-campus learning. Also, the STPP team has been working closely with our transit agency partners (AC Transit, LAVTA and Union City Transit) to ensure program implementation is coordinated and seamless for the 2020-21 school year.

## Policy News

### Re-elected unanimously!

Alameda CTC unanimously re-elected its Chair, City of San Leandro Mayor Pauline Cutter and its Vice Chair, City of Emeryville Councilmember John Bauters at its first Commission meeting of 2021.

Chair Cutter, when initially elected, outlined several priorities for 2020 and beyond. And for 2021, she has expanded those priorities to include:

- Advancement of **Active Transportation** and safety for all ages and abilities.
- Advancement of **Transit-oriented Development** that supports transportation, housing and jobs through strong partnerships.
- Delivery of **environmentally supportive and equity-focused investments and programs**, including transit, bike and pedestrian improvements, and new technologies for clean air and safe communities.



**Chair Pauline Cutter and Vice Chair John Bauters, pre-Covid.**

Over the past year, Chair Cutter has diligently worked with Commissioners and staff to prioritize efforts, including revising policy, initiating grants and reworking programs to navigate COVID-19 effectively and efficiently. This work includes:

- **Timely Use of Funds Policy** – approval of an extension of the agency's policy for one year, allowing revenue-strapped jurisdictions and transit agencies to strategically draw down their fund balances and manage expenditures.
- **Meals on Wheels and other delivery services policy** – approval to allow eligibility for costs associated with meal delivery to all local Measure B and Measure BB direct local distribution recipients.
- **COVID-19 Rapid Response Grant Program** – allocation of over \$900,000 in Measure B Bicycle and Pedestrian Discretionary funds for quick-build projects.

**Policy News cont'd on page 4**

## Programming Updates

### Safe Routes to Schools Mini-Grant Program

The Alameda CTC Safe Routes to Schools (SR2S) Program is committed to creating safe environments around schools that facilitate active transportation, carpooling and transit ridership for trips to and from school. This month Alameda CTC announced funding availability for the Safe Routes to Schools Mini-Grant Program (Program). The Program aims to support capital improvements that enhance the conditions for pedestrians, cyclists and transit riders traveling to and from school in Alameda County.

The Program contains \$1.7 million in Measure B sales tax program funds and Congestion Management Agency Transportation Improvement Program funds. Funds for the Mini-Grant program will be distributed using a formulaic distribution share based on student population, with a minimum of \$15,000 to each jurisdiction. Eligible jurisdictions have until March 15, 2021 to submit a funding request for eligible bicycle, pedestrian and transit improvements that not only achieve Program goals, but also meet Program requirements described within the Program guidelines.

Complete programming guidelines and the application are available on the Alameda CTC [Funding Opportunities webpage](#). Projects must be implemented and open to the public by July 1, 2023.

### Measure B COVID-19 Quick Build in Emeryville

In response to the COVID-19 pandemic, the City of Emeryville is implementing the Shared Doyle Street Quick-Build Project. This project aims to create safe, complete streets for people walking and bicycling on four blocks of a critical north-south

[Programming Updates cont'd on page 4](#)

## Finance Updates

### Budget updates and Q2 reports

During January, the Finance team worked to develop updates to the FY 2020-21 I-680 Sunol Smart Carpool Lane Joint Powers Authority (Sunol JPA) and Alameda CTC budgets. These updates address various changes to revenue and expenditure needs since the original budgets were adopted in May 2020, such as those related to the COVID-19 pandemic. These updates are expected to go to the Sunol JPA board in February, the Finance and Administration Committee (FAC) and the full Commission in March for approval.

In January, the team also finalized the FY 2020-21 second quarter financial and investment information to prepare reports for the Sunol JPA and Alameda CTC. These reports are expected to go to the Sunol JPA board in February, and the FAC and Commission in March.

The Finance team presented to the Commission in January to address sales tax revenues for FY 2020-21. The team will continue to keep the Commission updated on sales tax revenues throughout the fiscal year in response to the downturn during FY 2019-20 due to the pandemic.

### Contracting opportunities

Alameda CTC anticipates upcoming solicitation of bids and/or proposals for the following contracts:

#### Professional Services contracts

- State Route 262 Cross Connector
- I-880 Interchanges Improvements
- Oakland Alameda Access Project
- I-680 Express Lanes Southbound Gap Closure
- Multimodal Corridor project(s)

#### Construction

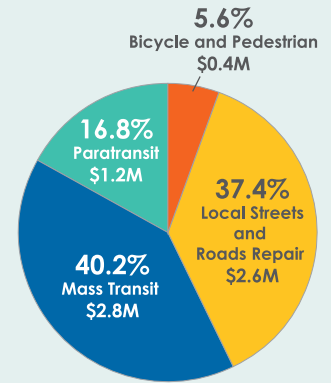
- State Route 84 Plant Establishment

For more information, visit the [Contracting Opportunities webpage](#).

## Transportation Investments

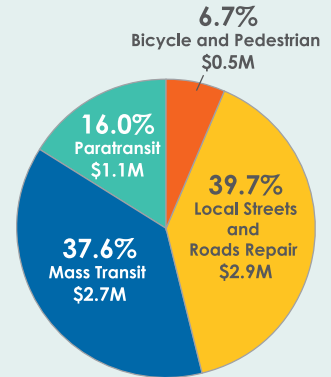
### Measure BB Program Distributions

Measure BB direct local distributions began in April 2015 and total over \$432.6 million; over \$7.0 million was distributed in November 2020.



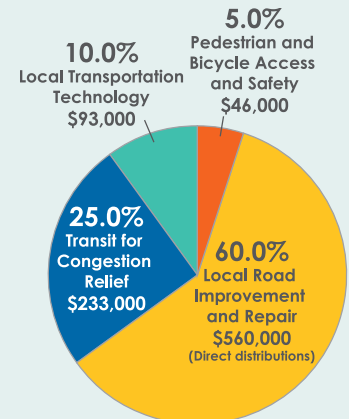
### Measure B Program Distributions

Measure B direct local distributions have totaled more than \$1.2 billion since 2002. In November 2020, over \$7.2 million was distributed for four programs.



### Vehicle Registration Fee

Since 2011, Alameda CTC has distributed more than \$68.8 million for local road repair; over \$0.9 million was collected in November 2020.



## Agency Activities

During the month of February, the following virtual events were held:

- BikeMobile events and school visits:
  - February 1 – Wells Middle School, Dublin
  - February 2 – Eden Community Workshop, Hayward; Wells Middle School, Dublin
  - February 4 – Winton Middle School, Hayward
  - February 5 – Palomares Elementary School, Castro Valley; Winton Middle School, Hayward
  - February 8 – Wells Middle School, Dublin
  - February 9 – Eden Area Community Workshop, Hayward; Wells Middle School, Dublin
  - February 11-12 – Winton Middle School, Hayward
  - February 16-18 – Fallon Middle School, Dublin
  - February 19 – Fallon Middle School, Dublin; Palomares Elementary School, Castro Valley
  - February 22-23 – Winton Middle School, Hayward
  - February 25 – Cabrillo Elementary School, Fremont; Winton Middle School, Hayward
  - February 26 – Cabrillo Elementary School, Fremont; Winton Middle School, Hayward
- State Legislative Visits:
  - February 1 – State Legislative Visit: Senators Steve Glazer and Nancy Skinner; Assemblymember Rob Bonta
  - February 2 – State Legislative Visit: Senator Bob Wieckowski; Assemblymember Bill Quirk
  - February 9 – State Legislative Visit: Assemblymember Alex Lee
  - February 10 – East Bay EDA Land Use & Infrastructure Committee
  - February 10 – State Legislative Visit: Assemblymember Buffy Wicks
  - February 12 – State Legislative Visit: Assemblymember Rebecca Bauer-Kahan
- February 12 – A virtual presentation to the East Bay Economic Development Alliance
- February 18 – Virtual public meeting for the I-880 Interchange Improvements at Whipple Road-Industrial Parkway Southwest and Industrial Parkway West

## Committee Activities

### Golden Sneaker Contest is now underway



The Golden Sneaker contest is a signature event for the Safe Routes to Schools (SR2S) Program (Program), with hundreds of students participating each year. During the 2021 school year, in response to the ongoing COVID-19 pandemic, the Program developed an online, interactive version of the event that offers the Golden Sneaker excitement while also following Alameda County Public Health orders.

From March 1-5, classrooms will work together to tally travel activities including: biking, scooters, skating, walking and use of shared transportation. At each participating school, the classroom with the highest participation rate will win fun participant incentives. There will also be incentives for teachers. For more information, [visit our webpage](#).

#### Policy News cont'd from page 2

- **Safe Routes to Schools Program** – temporary transition to a virtual program in fall 2020.

Chair Cutter and Vice Chair Bauters look forward to continuing delivery of crucial projects and programs that encourage multimodal transportation, active transportation and safe mobility for all.

## Committee Activities

### February advisory committees

The following committees met in February. Highlights include:

- February 4 – The [Alameda County Technical Advisory Committee \(ACTAC\)](#) approved the Transportation Fund for Clean Air FY 2021-22 Expenditure Plan Application and Call for Projects. The committee also received information on the Safe Routes to Schools Mini-Grant Program, the 2020 Multimodal Performance Report and the Metropolitan Transportation Commission Housing Incentive Pool Grant Program. Updates were also given on the Alameda County Federal Inactive Projects.
- February 4 – The [Bicycle and Pedestrian Advisory Committee \(BPAC\)](#) received a presentation on the 2020 Multimodal Performance Report and Bike/Ped Count. The committee also received updates on the 2021 Legislative Program and the Oakland Alameda Access Project, and reviewed its annual calendar and roster.
- February 22 – The [Paratransit Advisory and Planning Committee \(PAPCO\)](#) discussed updates to the paratransit program implementation guidelines and performance measures, and received an update on the 2020 Paratransit Discretionary Grant Program progress report and mobility management. Committee members also received reports from the Independent Watchdog Committee and transit advisory committees.

#### Programming Updates cont'd from page 3

route through Emeryville. The City is installing traffic calming measures along Doyle Street to meet increased outdoor recreation demand. Other project roadway segments will be converted to one-way shared bicycle and vehicle travel with speed humps to calm traffic and create separated bicycle facilities. This project is funded with a \$75,000 Measure B Bicycle/Pedestrian Program grant.