

Bike Highways

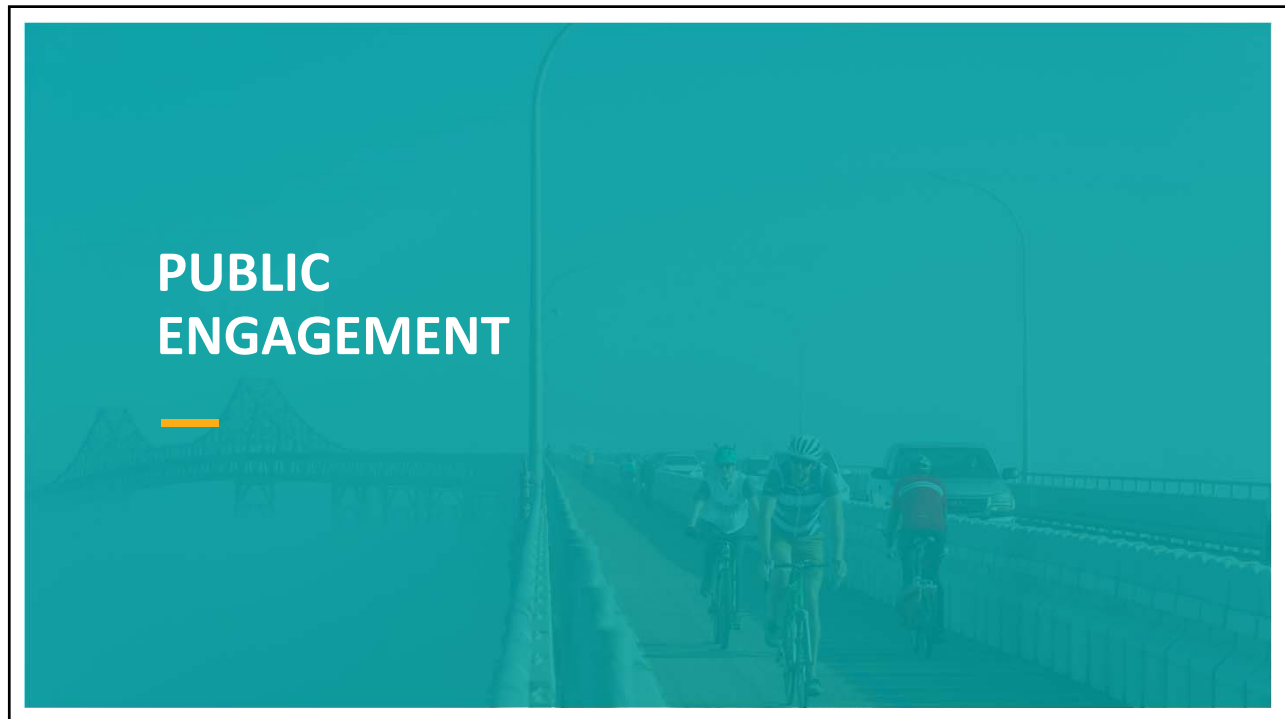
Alameda County Transportation Commission BPAC

CALTRANS BAY AREA BIKE HIGHWAY STUDY | July 15, 2021





PROJECT TIMELINE





PUBLIC ENGAGEMENT

ABOUT GET INVOLVED EVENTS RESOURCES CONTACT ESPAÑOL

WEBSITE LAUNCH

d4bikehighwaystudy.org

- About the project
- Link to survey & future events
- Project timeline
- Resources
- Comment box

About


Caltrans Bay Area (District 4) manages nearly 1,400 miles of State Highway corridors throughout the Bay Area. The goal of this Study is to understand where Bike Highways may be installed alongside State Highway corridors.


The Study builds off of the recommendations included in the 2018 **Caltrans District 4 Bike Plan** and the 2017 California State Bicycle and Pedestrian Plan, **Toward an Active California**.

What is a Bike Highway?

A bike highway is a high-quality, uninterrupted, long-distance bikeway that reduces barriers to destinations that people want to travel to and from, especially places which may normally be difficult to bike to. Bike highways may consist of a mix of on-street facilities and fully-separated trails and should be designed so as to accommodate people of all ages and abilities riding bikes, as well as people walking and rolling where appropriate and feasible. For this Study, Caltrans is evaluating bike highways parallel to State highway corridors.


Click to zoom



alta 

PUBLIC ENGAGEMENT

SURVEY



QUESTIONS

- Current and pre-COVID bicycle trip frequency and purpose
- Barriers to Bicycling
- Bike Highways
 - Preferred terminology
 - User preferences
 - Safety concerns
 - Design preferences
- Demographics

Caltrans Bay Area Bike Highway Study Survey

Welcome to the Caltrans Bay Area Bike Highway Study Survey!

Caltrans Bay Area wants your input on which features will make bike highways safe and easy for you to use! Share your feedback by taking our short survey, which will ask about your bicycling habits, as well as what makes you feel comfortable while bicycling. All questions are optional.


Caltrans Bay Area is evaluating the implementation of bike highways in the Bay Area. While there is no agreed-upon definition of a bike highway in California, Caltrans Bay Area is defining bike highways as bicycle facilities that:

- Allow for long-distance bicycle travel
- Enable uninterrupted bicycle travel (e.g. few stoplights or intersection crossings)
- Reduce physical barriers to destinations that people want to travel to and from

These facilities may include a mix of bike paths on existing streets and fully-separated trails. They will be designed to accommodate people of all ages and bike-riding abilities, as well as people walking and rolling (such as using mobility devices or on electric scooters and skateboards), where possible. For the purpose of this Study, Caltrans will evaluate bike highways that are parallel to State Highways.

For project updates and additional information, visit d4bikehighwaystudy.org

OK

alta 

BIKE HIGHWAYS BACKGROUND

BIKE HIGHWAYS BACKGROUND



What are Bike Highways?*

- High-quality, uninterrupted, and long-distance bikeways
- Support higher speed travel
- Support large volumes of people bicycling
- Connect regional destinations



Bike Highway in Denmark. Photo: Maurits Lopez Cardozo

* Based on review of worldwide best practices



BIKE HIGHWAYS BACKGROUND



Intended Users

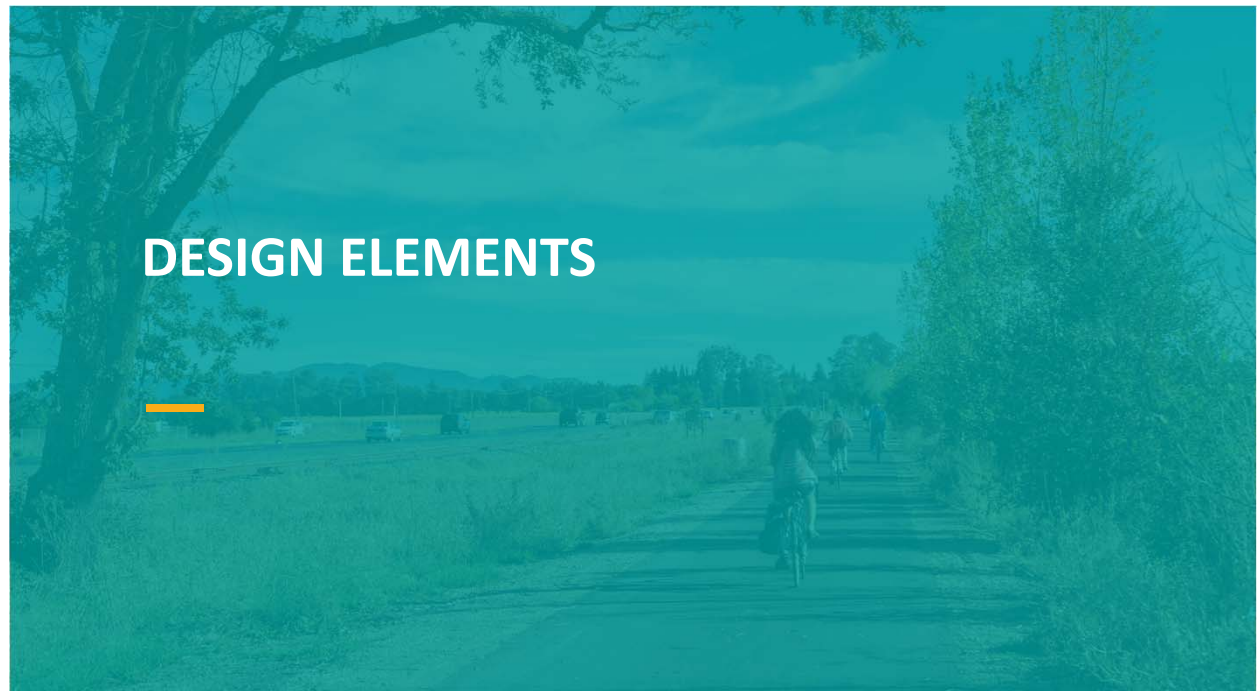
- Bicycle Commuters
- Recreational riders
- Powered micromobility
- E-bikes



Bike Highway in the Netherlands. Photo: Maurits Lopez Cardozo



DESIGN ELEMENTS



DESIGN ELEMENTS

Design Principles

- Higher speed
- Dedicated
- Low Effort
- Direct



Photo: Alta Planning + Design;
Maurits Lopez Cardozo;

DESIGN ELEMENTS

Design Elements

- Alignment
- Intersections
- Materials and Amenities



Photos: Alta Planning + Design;
Maurits Lopez Cardozo;
Sergio Ruiz

DESIGN ELEMENTS

Alignment

- Levels of Separation
- Design Speeds
- Width
- Slope
- Vehicles Permitted



Photo: Alta Planning + Design

DESIGN ELEMENTS

Intersections

- Access Points and Connections to Local Bikeways
- Intersection/Crossing Treatments
- Green Wave Signal Phasing



Photo: Alta Planning + Design; Maurits Lopez Cardozo

DESIGN ELEMENTS

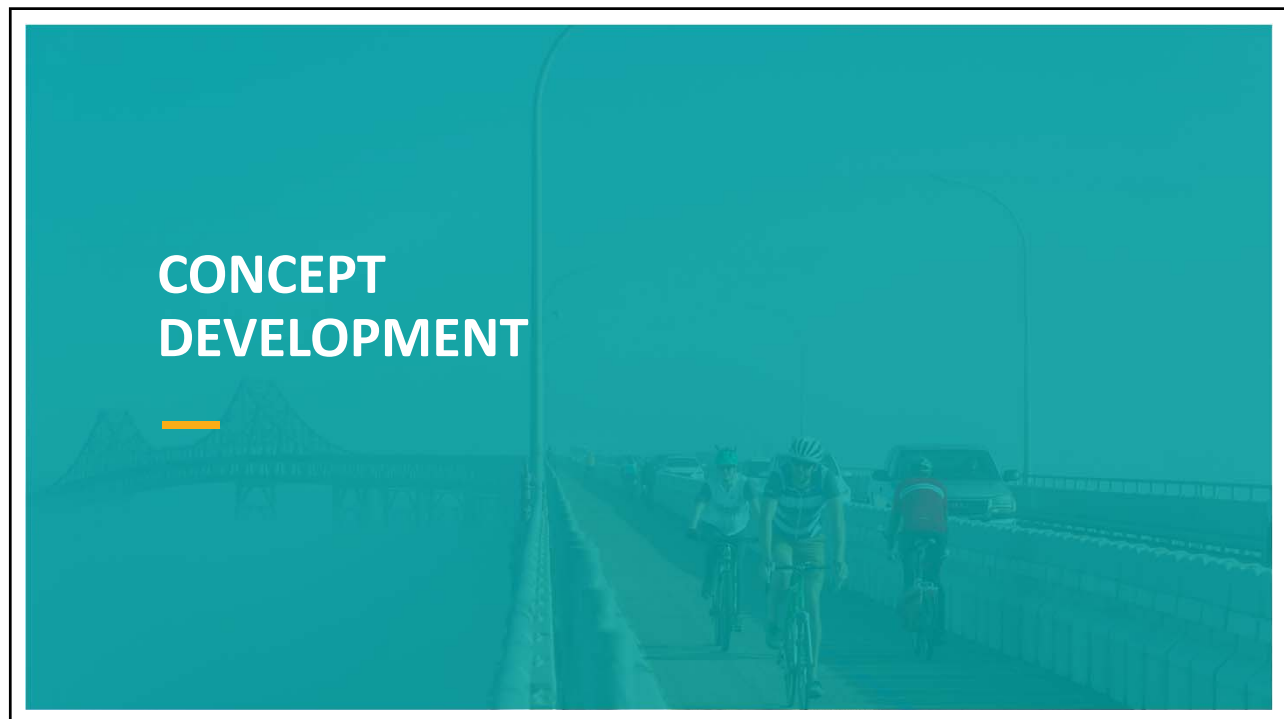
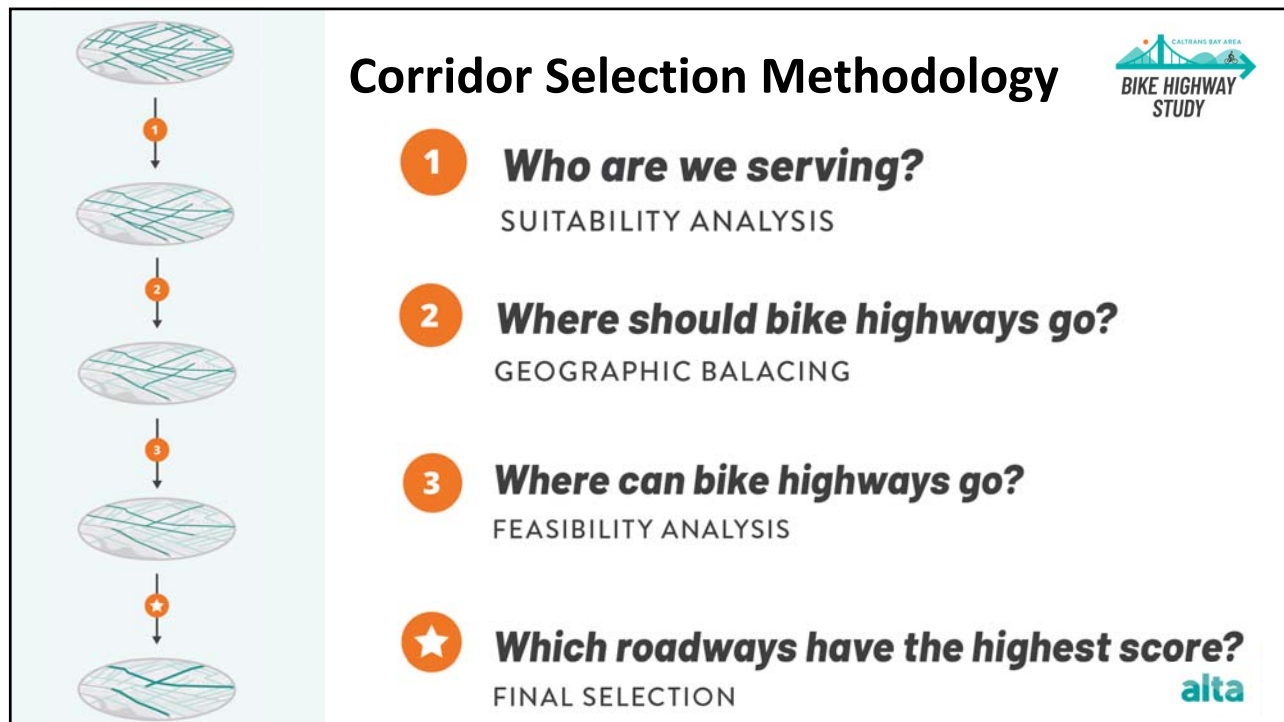
Materials and Amenities

- Surface Materials
- Branding/Wayfinding
- Lighting
- Support Facilities



Photos: Alta Planning + Design
Maurits Lopez Cardozo

PRIORITIZATION METHODOLOGY

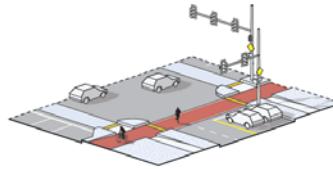


CONCEPT DEVELOPMENT

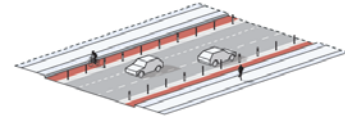


Concept Development

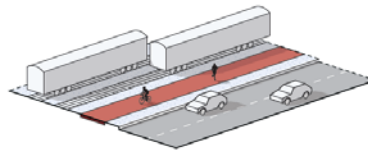
- Candidate corridor typologies
- Network connection concepts
- Visual Simulations
- Cost estimates



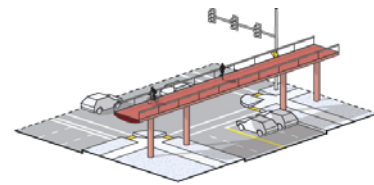
PROTECTED INTERSECTION
Protected intersections with signal timing support safe and efficient roadway crossing.



CYCLE TRACKS
Cycle tracks are on-street options that provide separation from traffic. These may be considered as two-way (one side) or one-way (both-sides) facilities.



OFF-STREET
As space allows, the simplest and safest option is an off-street trail.



OVERCROSSING
Overcrossings provide a safe and iconic road or rail crossing.

NEXT STEPS



NEXT STEPS

Next Steps

- Finalize list of candidate corridors for further concept development
- Community feedback on candidate corridors
 - Working Group Meeting #3 (Late July)
 - Corridor-level Community Engagement (Aug-Sept)
- Develop design concepts for candidate corridors



Photos: Sergio Ruiz; Maurits Lopez Cardozo

thank you! questions?

<https://d4bikehighwaystudy.org/>